

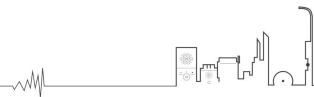
# XC-9013

## Audio Management Industrial Server



### MAIN FUNCTIONS

1. Professional rack type industrial computer box design, the whole machine adopts aluminum alloy structure, the heat dissipation effect is very excellent, has high anti-magnetic, dustproof, anti-impact ability;
2. Adopt 17.3-inch industrial grade reinforced touch screen, easy to use touch screen control;
3. Built-in large capacity hard disk, with anti-vibration, anti-fall, read and write speed, low power consumption;
4. Industrial-grade special motherboard design, faster processing speed, stronger operation performance, suitable for long-term operation;
5. Supportive of controlling all sound source signals of the broadcast system, allocate broadcast areas, and configure terminal information;
6. Equipped with red emergency button and emergency handheld microphone, can be used for emergency warning/evacuation voice announcement.
7. According to the electronic map formed by the service software, the real-time situation of each broadcasting terminal can be viewed at the control;
8. Standard RJ45 network port. It can be accessed from an Ethernet port and supports cross-network segment and cross-routing.



## SPECIFICATIONS

### POWER PARAMETERS

---

Power Input:AC 200-240V~/47-63Hz/3.5A

### HARDWARE&SOFTWARE PARAMETERS

---

**CPU:** i5 ,Generation 6 ,Main Frequency:3.2GHz ,Four cores and four threads

**CPU Cooler:**

Rated voltage:12V ,

Rated current: 0.45A,

Rated speed: 4300RPM ±10%

**Display:**17.3 inch ,1920\*1080 , Luminance:350 , Contrast Ratio:600:1

**Touch Screen:**4-Wire Touch Screen

**RAM:**8GB

**Hard Disk:**240GB SSD

**Windows OS:**Support Windows® 7/ 8.1/ 10

**Pre-Install Software:**SPON XC-9000 Management Software

### MECHANICAL & ENVIRONMENTAL PROPERTIES

---

**Installation Method:**Rack Mount

**Installation Environment:**Dry Indoor Locations

**Operating Temperature:**-10°C~+55°C

**Operating Humidity:**≤90% RH non-condensing

**Dimension:**484\*353.5\*303(mm)

**Weight:**12.8KG

**Warranty:**2 Years

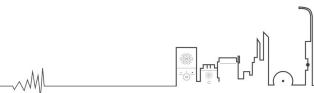
### ACCESSORIES

---

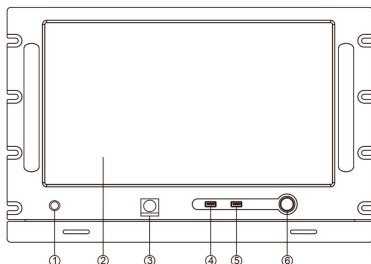
1×Power Cord

1×Quick User Guide

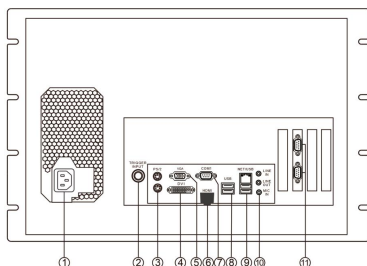
1×Certificate of quality and warranty card



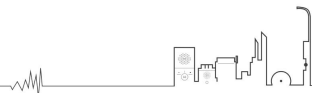
## INTERFACE DESCRIPTION



- ① Emergency microphone jack: Connect handheld microphone
- ② LCD touch screen
- ③ Emergency broadcast button
- ④ USB 2.0
- ⑤ USB 2.0
- ⑥ Power Switch



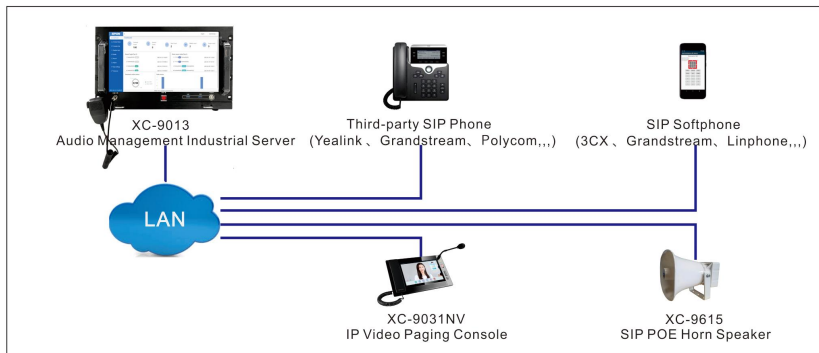
- ① AC220V Power Input
- ② Trigger Input
- ③ PS/2 Interface
- ④ DVI-D Interface
- ⑤ VGA Interface
- ⑥ HDMI Interface
- ⑦ COM1 Interface
- ⑧ USB 3.1 Interface
- ⑨ RJ45 Interface
- ⑩ Line In/Out , Mic In
- ⑪ Two COM interfaces



## TYPICAL APPLICATION

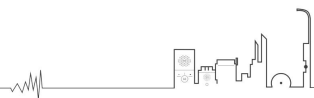
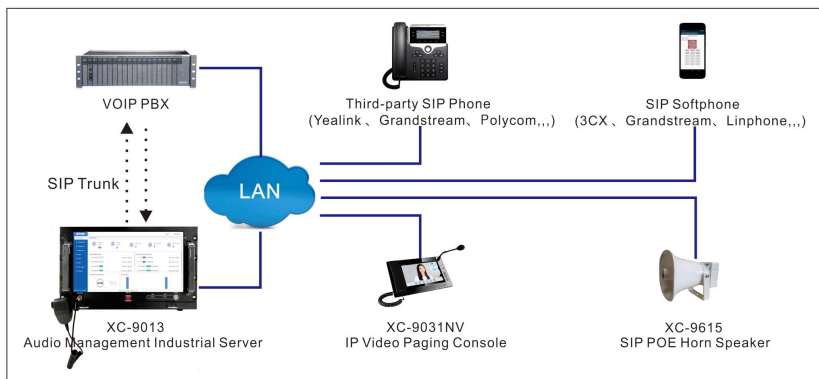
### APPLICATION 1

The Audio Management Industrial Server XC-9013 built-in management software which support to integrate the third-rd party standard SIP phone or SIP softapp to realize real-time SIP voice paging announcement .Also the software XC-9000 support creat timed task 、 real-time task broadcast to the designated terminals or zones .



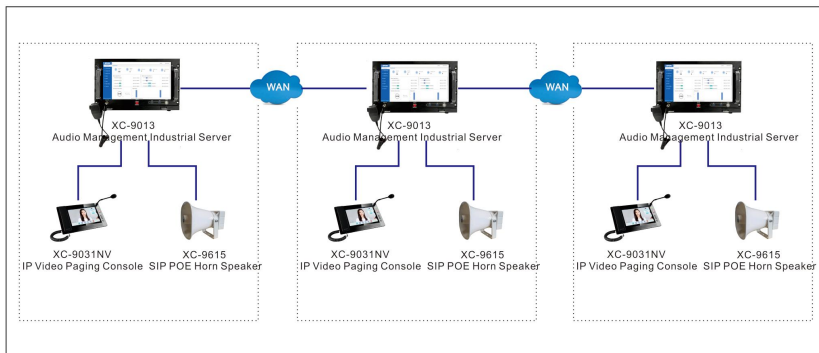
### APPLICATION 2

The Audio Management Industrial Server XC-9013 with built-in management software which support to make integration with thrid-party VOIP telephone system by using SIP Trunk , the SIP phone under the VOIP telephone system can make communication with SPON IP intercom and PA audio terminal .



### APPLICATION 3

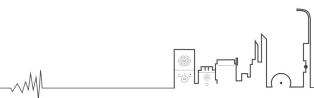
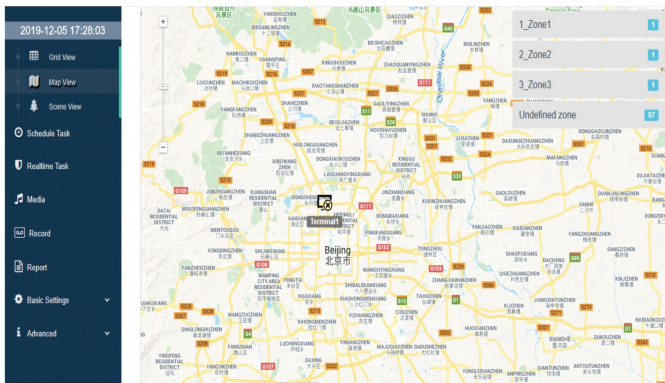
The Audio Management Industrial Server XC-9013 with built-in management software which support multiple server interconnection to expand the scale. The IP intercom or IP PA devices under the corresponding server can make intercommunication between each other.



## EXPANDING MODULE APPLICATION

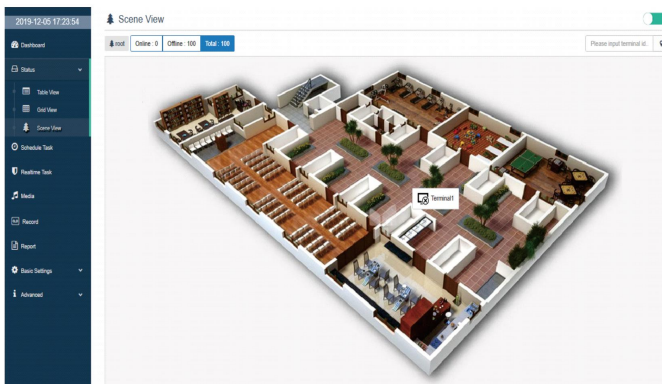
### Electronic Map Module

The Audio Management Industrial Server XC-9013 with built-in management software which supports the function of electronic map, user can customize the terminal location on the map, and quickly realize the functions of intercom,



### Scene View Module

The Audio Management Industrial Server XC-9013 with built-in management software which supports scene views, which can import floor plans, structural drawings, 3D renderings, and customize terminal positions on the views to



### Video View Module

The Audio Management Industrial Server XC-9013 with built-in management software which supports video view , user can binding the external IP camera with IP intercom device ,when the intercom device call to central microphone , the video of IP camera will pop-up on the software XC-9000 interface ; Also can view the real-time video of IP camera on the module.

