

XC-9000SE

Industrial Management Server

—

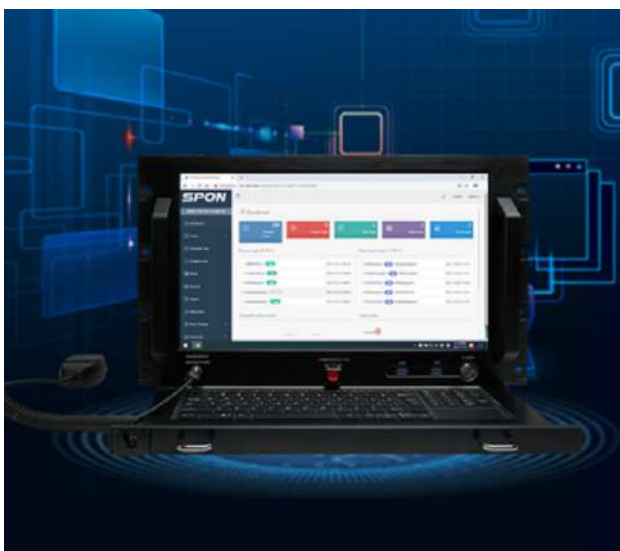
The Core of Efficiency and Control.



MAIN FEATURES

1. Design and Hardware

- Rack-type industrial computer with an aluminum alloy structure for optimal heat dissipation and durability.
- 17.3-inch industrial-grade touch screen and high-performance motherboard for efficient long-term operation.
- Large capacity, low-power hard disk with anti-vibration features.



2. Broadcast Control and Emergency Functionality

- Full control over broadcast system signals, areas, and terminal configuration.
- Emergency button and handheld microphone for urgent announcements.
- Service software for real-time broadcast terminal monitoring.

3. Network Compatibility

Standard RJ45 network port, compatible across various network segments and routers

SPECIFICATION

POWER PARAMETERS

Power Supply	AC 200-240V ~/47-63Hz/3.5A
--------------	-------------------------------

HARDWARE&SOFTWARE PARAMETERS

CPU	Core i5-7500, Gen6, 3.8Ghz / i7-6700 (Optional)
CPU Cooler	Rated voltage:12V , Rated current: 0.45A, Rated speed: 4300RPM ±10%
Display	17.3 inch ,1920*1080 , Luminance:350 , Contrast Ratio:600:1
Touch Screen	4-Wire Touch Screen
RAM	16GB
Hard Disk	240GB SSD
Windows OS	Support Windows® 7/ 8.1/ 10
Pre-Install Software	SPON XC-9000 Management Software

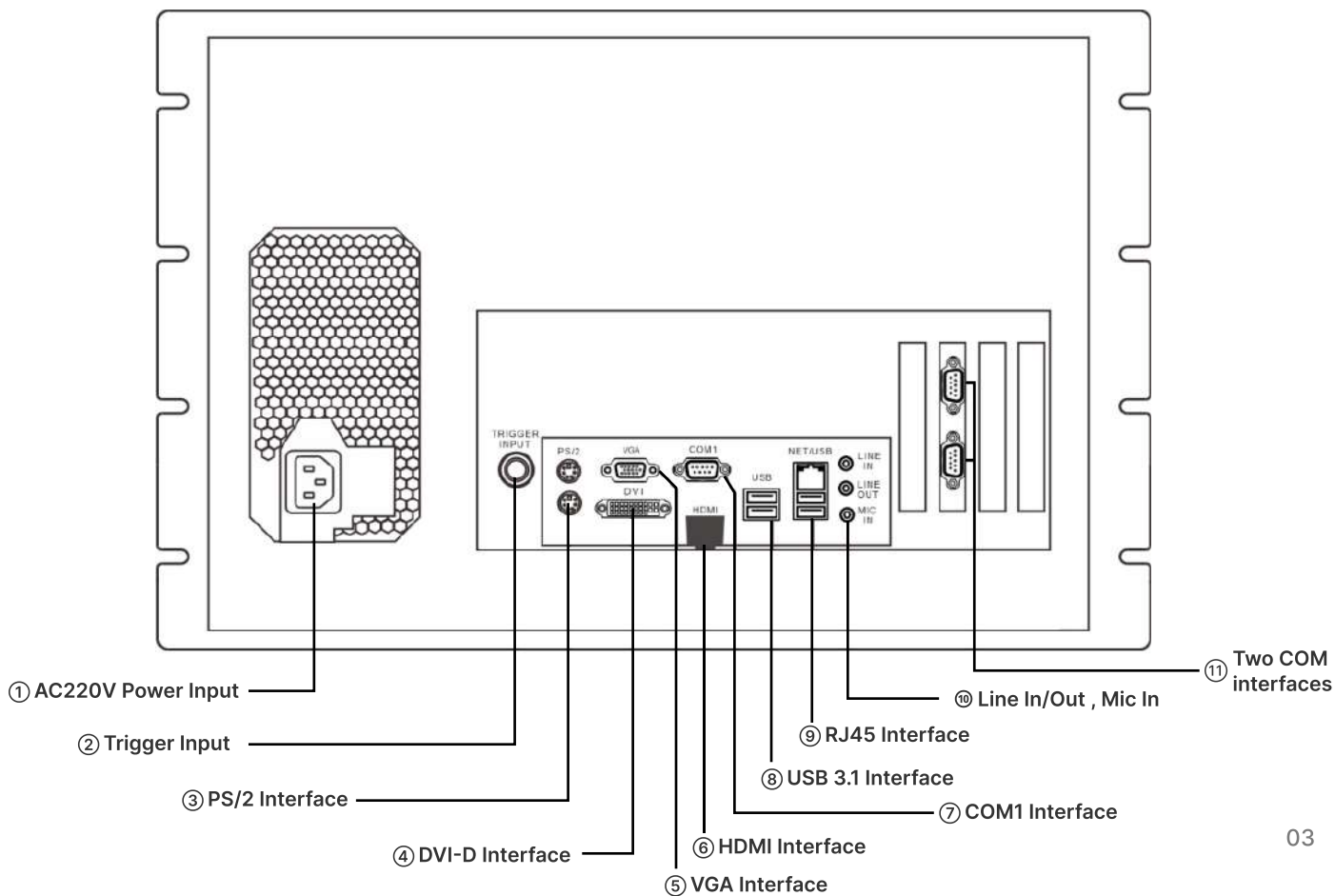
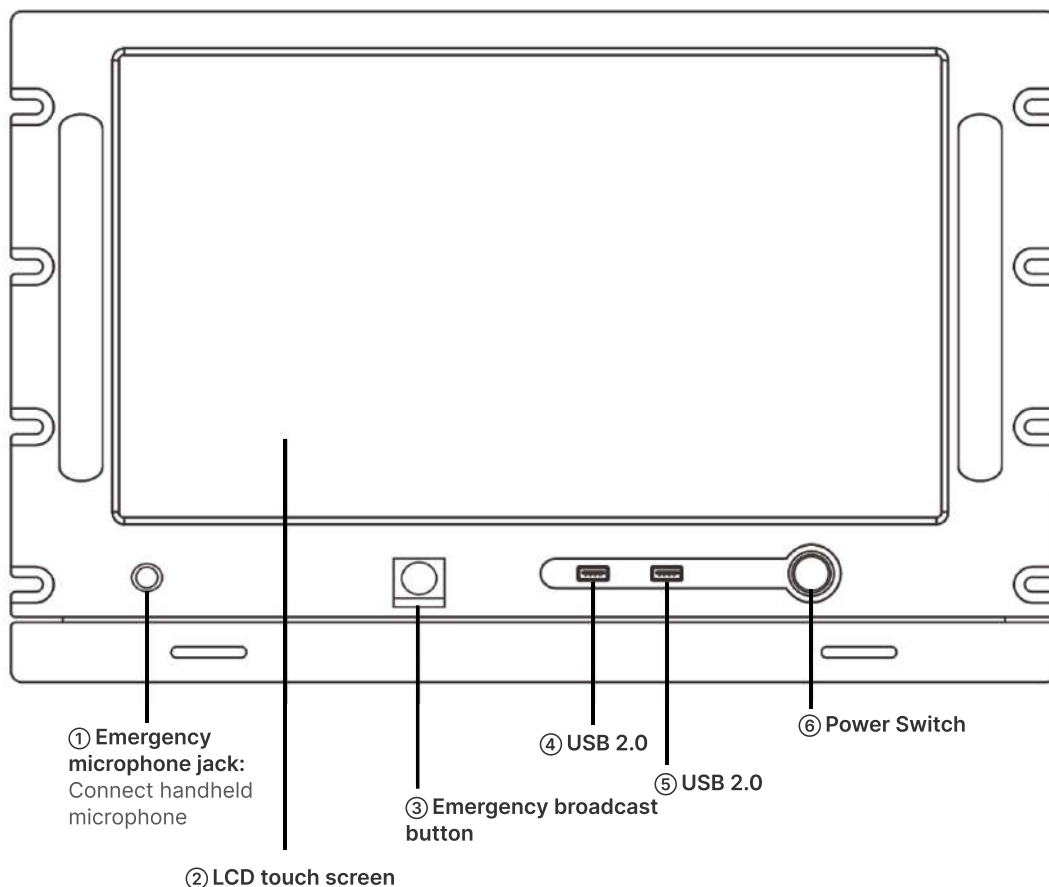
MECHANICAL & ENVIRONMENTAL PROPERTIES

Installation Method	Rack Mount
Installation Environment	Dry Indoor Locations
Operating Temperature	-10°C~+55°C
Operating Humidity	≤90% RH non-condensing
Dimension	484*353.5*303(mm)
Weight	12.8KG
Warranty	2 Years

ACCESSORIES

1×Power Cord
1×Quick User Guide
1×Certificate of quality and warranty card

INTERFACE DESCRIPTION



EXPANDING MODULE APPLICATION

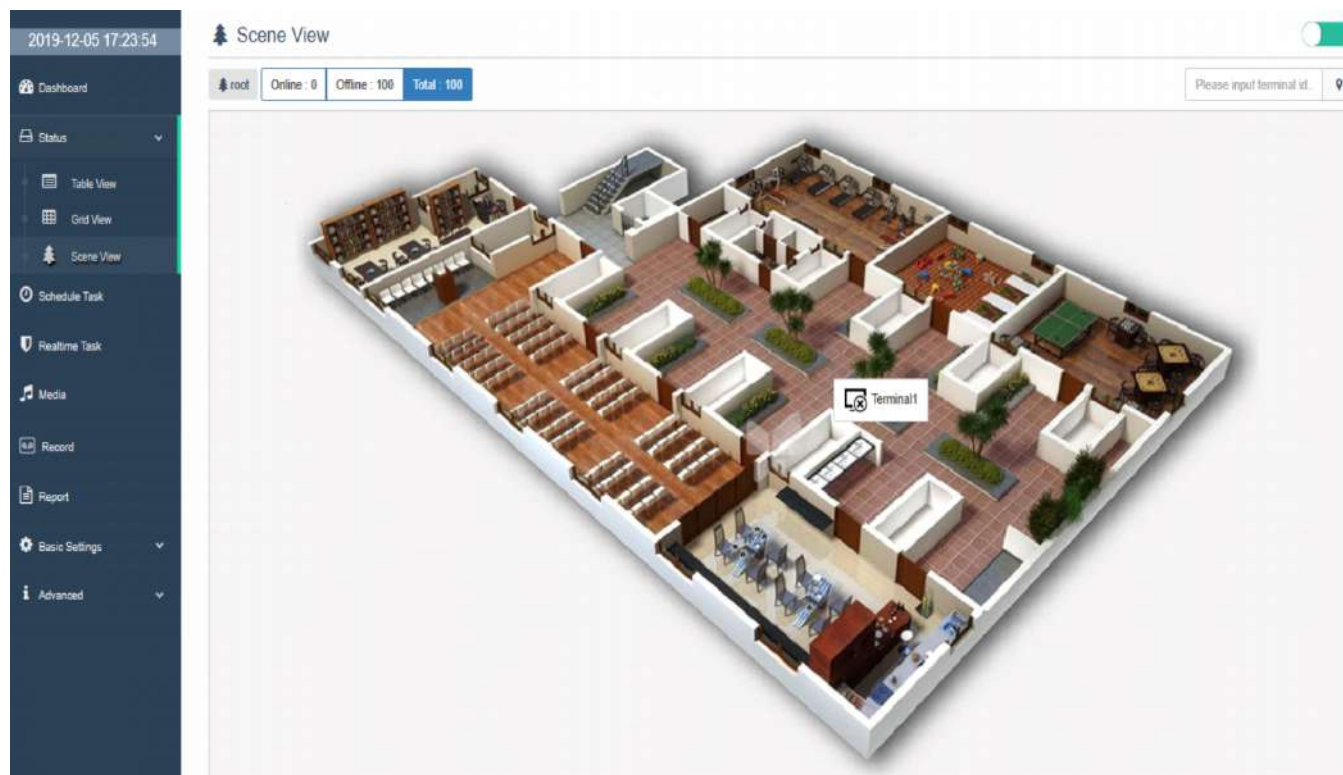
Electronic Map Module

The Audio Management Industrial Server XC-9013 with built-in management software which supports the function of electronic map, user can customize the terminal location on the map, and quickly realize the functions of intercom,



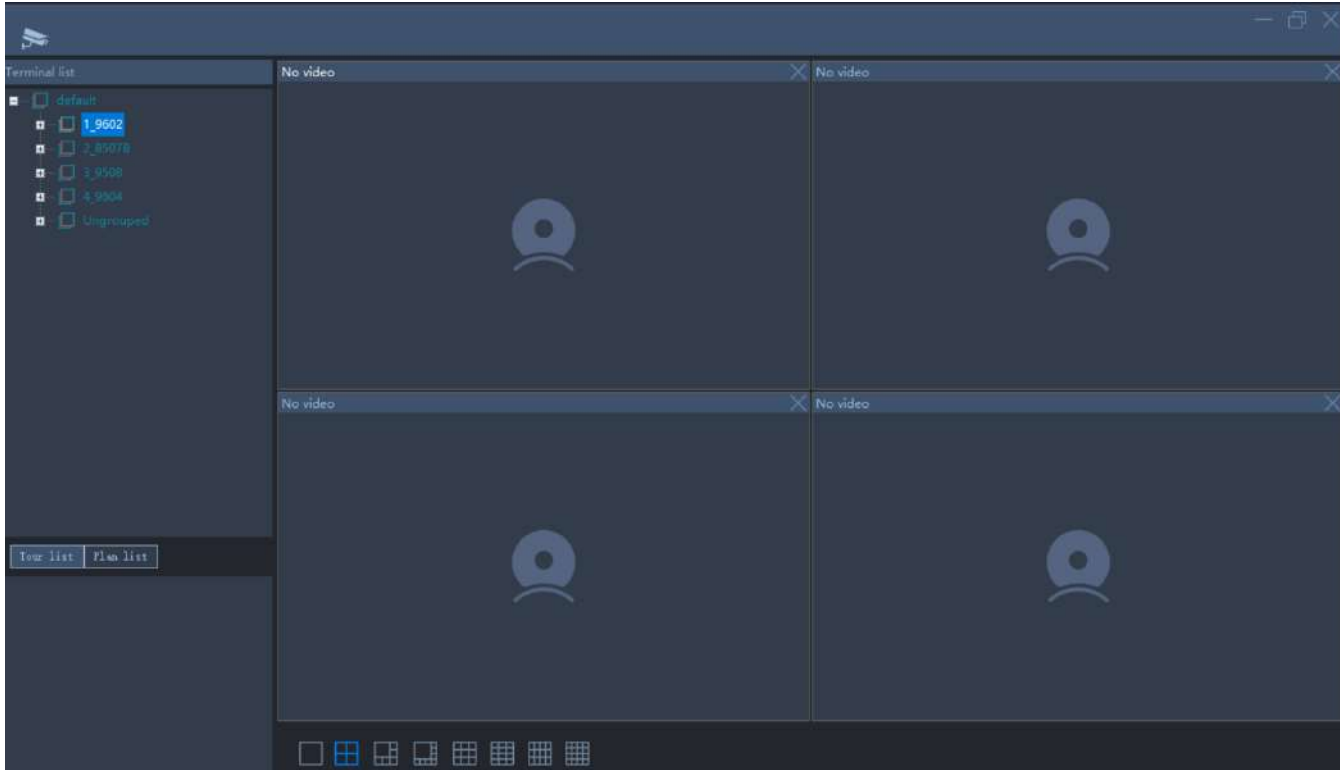
Scene View Module

The Audio Management Industrial Server XC-9013 with built-in management software which supports scene views, which can import floor plans, structural drawings, 3D renderings, and customize terminal positions on the views to quickly implement intercom, broadcast, and monitoring functions.



Video View Module

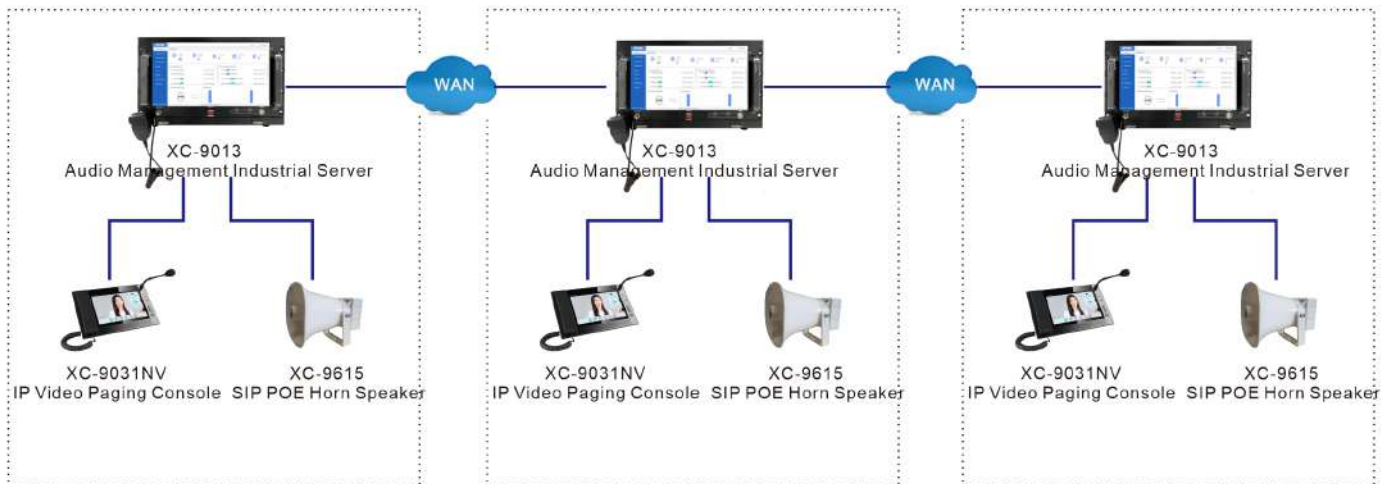
The Audio Management Industrial Server XC-9013 with built-in management software which supports video view , user can binding the external IP camera with IP intercom device ,when the intercom device call to central microphone , the video of IP camera will pop-up on the software XC-9000 interface ; Also can view the real-time video of IP camera on the module.



APPLICATIONS

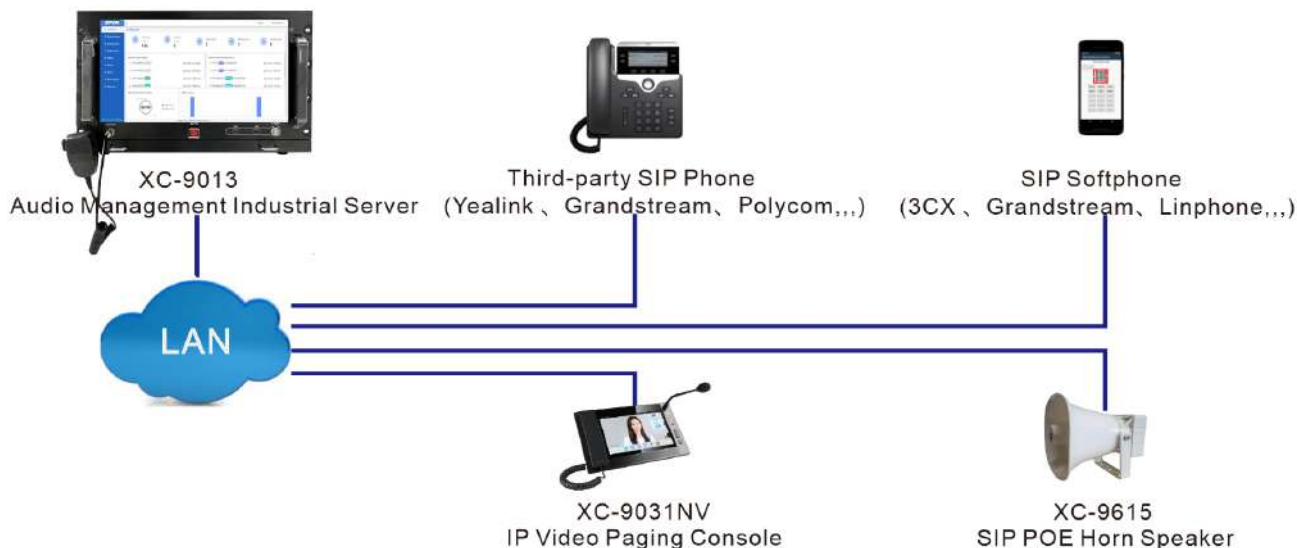
Application 1

The Audio Management Industrial Server XC-9013 with built-in management software which support multiple server interconnection to expand the scale. The IP intercom or IP PA devices under the corresponding server can make intercommunication between each other.



Application 2

The Audio Management Industrial Server XC-9013 built-in management software which support to integrate the third-rd party standard SIP phone or SIP softapp to realize real-time SIP voice paging announcement .Also the software XC-9000 support creat timed task 、 real-time task broadcast to the designated terminals or zones .



Application 3

The Audio Management Industrial Server XC-9013 with built-in management software which support to make integration with thrid-party VOIP telephone system by using SIP Trunk , the SIP phone under the VOIP telephone system can make communication with SPON IP intercom and PA audio terminal .

